

AIRCRAFT ACTIVITY REPORT

ARGUS RELEASES JANUARY BUSINESS AIRCRAFT ACTIVITY

IMMEDIATE RELEASE // CINCINNATI, OH // February 12, 2018

JANUARY FLIGHT ACTIVITY STARTS OFF THE NEW YEAR WITH INCREASES IN ALL CATEGORIES WITH A RISE OF 4.0% YEAR OVER YEAR.

The tables below reflect business aircraft activity data for January 1-31, 2018 vs. January 1-31 (y/y), 2017 and January 1-31, 2018 vs. December 1-31, 2017 (m/m) respectively.

YEAR-OVER-YEAR FLIGHT ACTIVITY

Reviewing year over year flight activity (January 2018 vs. January 2017), TRAQPak data indicates that January 2018 posted an increase of 4.0%. The results by operational category were all positive with Part 135 activity producing the largest yearly gain, up 8.0%. Fractional activity recorded a rise of 2.2% and Part 91 activity rebounded from its December fall to rise 1.5%. The aircraft categories were positive as well with turboprops posting the largest gain from 2017, up 5.7%. Large jets followed with an increase of 4.0%, and mid-size jets posted a 3.1% year over year increase. Light jets posted a modest 2.8% increase as well.

January 2018 vs. January 2017

	Part 91	Part 135	Fractional	ALL
Turbo Prop	2.9%	9.5%	5.8%	5.7%
Light Jet	1.1%	6.0%	0.5%	2.8%
Mid-Size Jet	-0.5%	5.0%	6.9%	3.1%
Large Jet	2.1%	13.2%	-11.9%	4.0%
All Aircraft	1.5%	8.0%	2.2%	4.0%

MONTH-OVER-MONTH FLIGHT ACTIVITY

January business aviation flight activity posted a modest month over month increase to finish up 0.1% from December 2017. Results by operational category were mostly red for the month, with Part 91 posting the only monthly increase, up 2.7%. Part 135 flight activity posted a decrease of 1.8% while Fractional activity saw the largest monthly drop, down 4.0%. Aircraft categories were mixed for the month, with large jets posting the largest monthly increase, up 3.7% from December. Turbo Props posted an increase of 0.6%, while light and mid-size jets recorded decreases of 1.6% & 0.9% respectively.

January 2018 vs. December 2017

	Part 91	Part 135	Fractional	ALL
Turbo Prop	2.3%	-1.2%	-4.3%	0.6%
Light Jet	1.8%	-4.2%	-7.3%	-1.6%
Mid-Size Jet	3.4%	-4.7%	-2.2%	-0.9%
Large Jet	4.0%	6.3%	-5.3%	3.7%
All Aircraft	2.7%	-1.8%	-4.0%	0.1%

ARGUS TRAQPak data is aircraft flight number specific arrival and departure information on all IFR flights in the US (including Alaska and Hawaii), the Caribbean and Canada.

Note: for purposes of this report, FAR Part 135 flight data represents all flight activity of aircraft on a Part 135 charter certificate regardless of individual flight mission (excluding cargo, scheduled Part 135, and fractional operators).



TRAQPak is the most sophisticated aircraft activity analysis and market intelligence reporting tool that integrates the intelligence of the world's largest business aviation databases, with aircraft movement data and aircraft owner/operator contact information, to help make better, more informed business planning decisions.

ARGUS International, Inc. (ARGUS) is a specialized aviation services company whose mission is to provide the aviation marketplace with data and information necessary to make informed decisions and manage risk. ARGUS provides world-class aviation software and business management solutions, including AVMOSSYS business management software, TRAQPak, CHEQ, and ARMOR SMS.

Founded in 1995, ARGUS is headquartered in Cincinnati, Ohio, and actively engaged around the globe.



NEXT MONTH'S FORECAST

Looking ahead...TRAQPak analysts estimate there will be a 3.8% increase in overall flight activity year over year in February 2018.

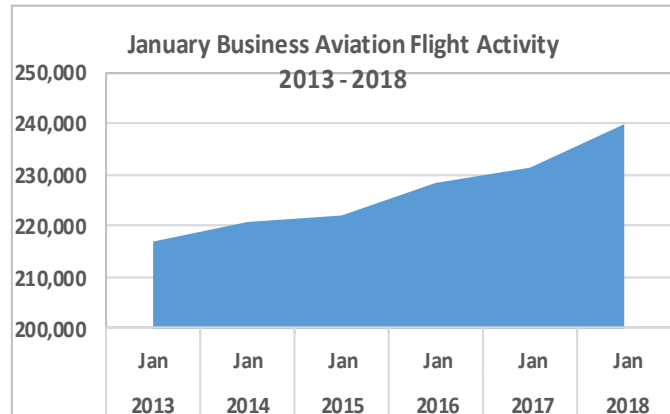


FLIGHTS BY DAY

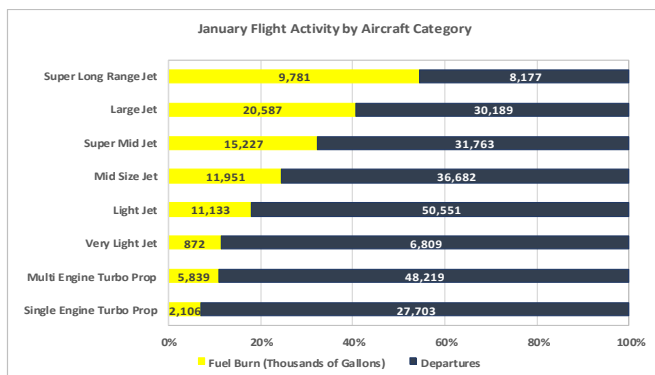
	2017	2018	% Change
Weekday	9,044	8,402	2.8%
Weekend	5,459	5,924	8.5%



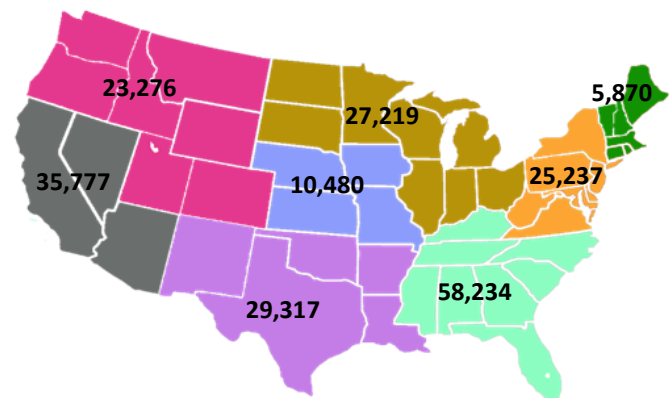
BUSINESS AVIATION FLIGHT ACTIVITY



FLIGHT ACTIVITY BY AIRCRAFT



REGIONAL BREAKDOWN (DEPARTURES)



TRAQPAK AIRCRAFT CATEGORIES

TURBO PROP

Single Engine Turboprop Aircraft and Multi-Engine Turboprop Aircraft

SMALL CABIN JET

Very Light Jets (VLJ) and Light Jets (LJ)-Jet aircraft with a maximum takeoff weight of less than 20,000 lbs.

MID-SIZE CABIN JET

Mid-size Jets (MJ) and Super Mid-size Jets (SMJ) - Jet aircraft with maximum takeoff weight of over 20,000 to 41,000 lbs.

LARGE CABIN JET

Large Jets, Ultra-Long Range and Heavy Jets - Jet aircraft with maximum takeoff weight of over 41,000 lbs. For weight over 41,000 lbs and Ultra-Long Range and Heavy Jets having an NBAA IFR Range above 6,000NM.

MEDIA CONTACT

Sally Feldmann, Director of Marketing // ARGUS International // +1 513.852.1021 // sally.feldmann@argus.aero

NOTICE OF DISCLAIMER

Readers are advised that this report is issued solely for informational purposes. ARGUS also makes no promise and/or warranty to maintain and/or update the published information. Suspension of this service may occur at any time at the discretion of the Institution. ARGUS shall not be liable for any errors or inaccuracies, regardless of cause, or the lack of timeliness of, or any delay or interruptions in, the transmission thereof to the users.